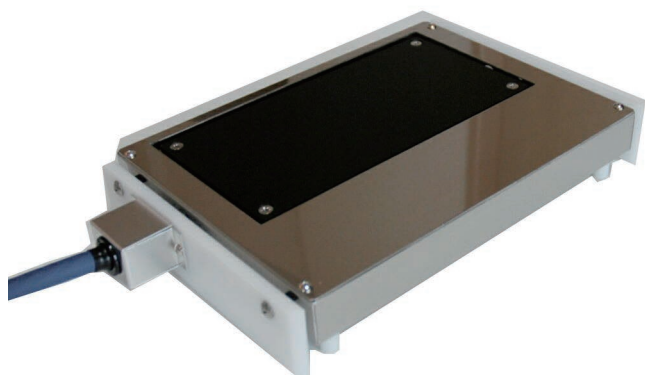


# Vacuum environmental hotplate PH-220S



## Characteristic



- Maximum temperature 400°C
- Vacuum environmental Hotplate  
\* If you can offer to use environment, we will customize support.
- Low vacuum (up to  $10 \times 10^{-1}$  Pa), can be used as an inexpensive hot plate.
- By Multiple Element Sealing, temperature sensor through from the vacuum chamber can also be easily.
- The temperature controller, the installation of the chamber to the outside, operability is excellent.

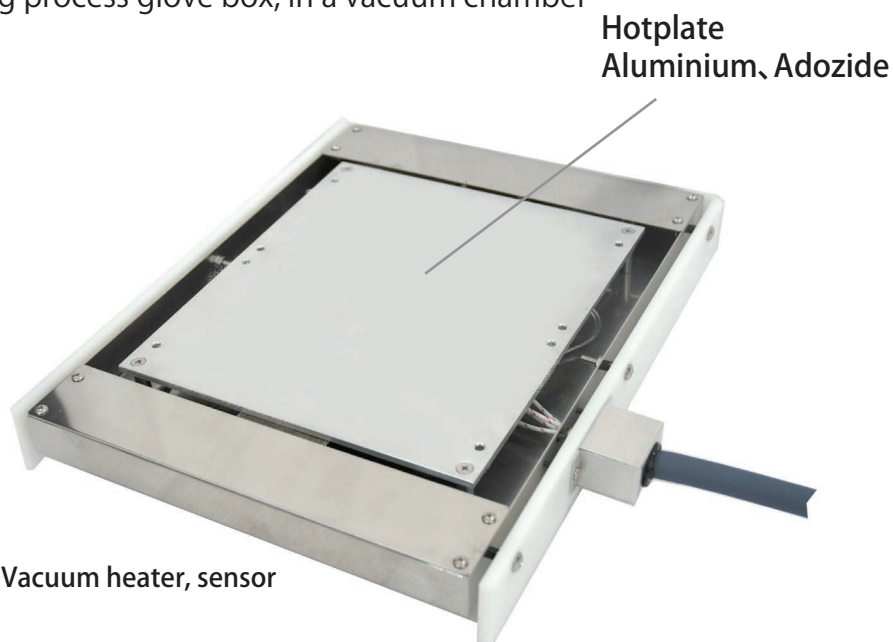
## Application/Structure

It is most suitable for the heating process glove box, in a vacuum chamber



Multiple Element Sealing  
PCC151

Connection cable glove box, and the chamber



Vacuum environmental Hotplate PH-220S

## Specification/Customize

Temperature	RT~400°C	○: Customized support
Hotplate Size	50×100, 200×200mm	○
Temperature Uniformity	±1.5%	